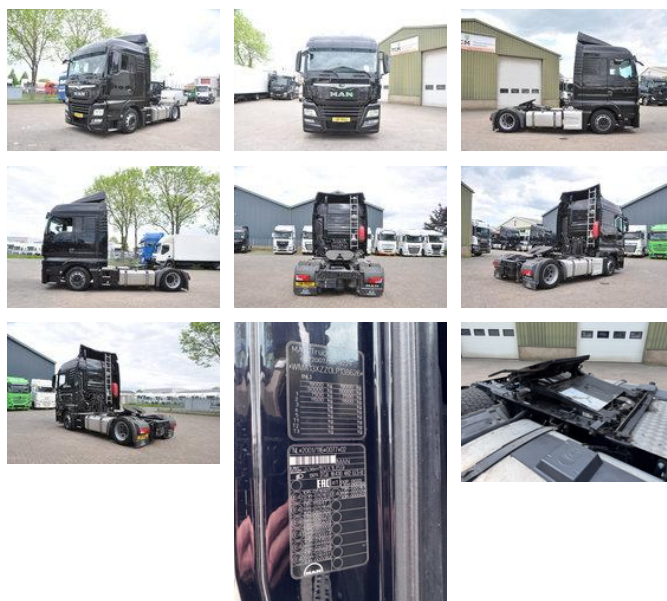


MAN TGX 18.430 XLX 4X2 MEGA + HEFSCHOTEL

General features

Brand	MAN
Model	TGX 18.430
Subcategory	Mega-volume
Odometer reading	669.400km
Construction year	2020
Date of first registration	02-01-2020
Color	Black
Condition	Used
General condition	Very good
Fuel	Diesel
Emission class	Euro 6
Reference	226



Characteristics

Empty weight	430kg
GVW	19.000kg
Cabin	Sleeper cabin
Serial number	WMA13XZZ0LP138626
Cylinder contents	12.419cc

MAN TGX 18.430 XLX 4X2 MEGA + HEFSCHOTEL

Technical specifications

Number of axes	2
Axis configuration	4x2
Transmission	Automatic
Engine output	316

Accessories

- Adaptive Cruise Control
- Differential Lock
- ESP
- Hill Assist
- Lane Assist
- Heated Mirrors
- Anti-lock braking system
- Air conditioning
- Aluminium fuel tank
- Central locking
- Cruise control
- Roof spoiler
- Twin fuel tank
- Electrically operated windows
- Refrigerator
- Air suspension
- Fog lights
- Particulate filter
- Sleeper cab
- Speed limiter
- Stability control
- Vehicle heater
- Visor
- Catalyst
- Trailer coupling
- Power steering
- Passenger seat
- Airbags
- Radio/Cd/Audio system
- Central doorlocking
- Electric windows
- EBS
- Climate control
- Heater
- Alarm
- ASR (Anti-Slip Regulation/Traction Control)

